

The background of the slide is a grayscale image of a classical building facade, featuring several large, fluted columns supporting a decorative entablature. The image is slightly faded and occupies the left and bottom portions of the slide.

EJF Investments Limited (LN: “EJFI”)

The Opportunity and Track Record

EJFI: A Unique Income Opportunity With Lower Risk and Upside Potential

EJF Investments Ltd (“EJFI” or the “Company”, together with its subsidiary the “Group”) owns a diverse portfolio of assets that provide attractive risk-adjusted cash flows, which are passed on to shareholders in the form of quarterly dividends.

98.94%

Total NAV Return

Since inception, including dividends.

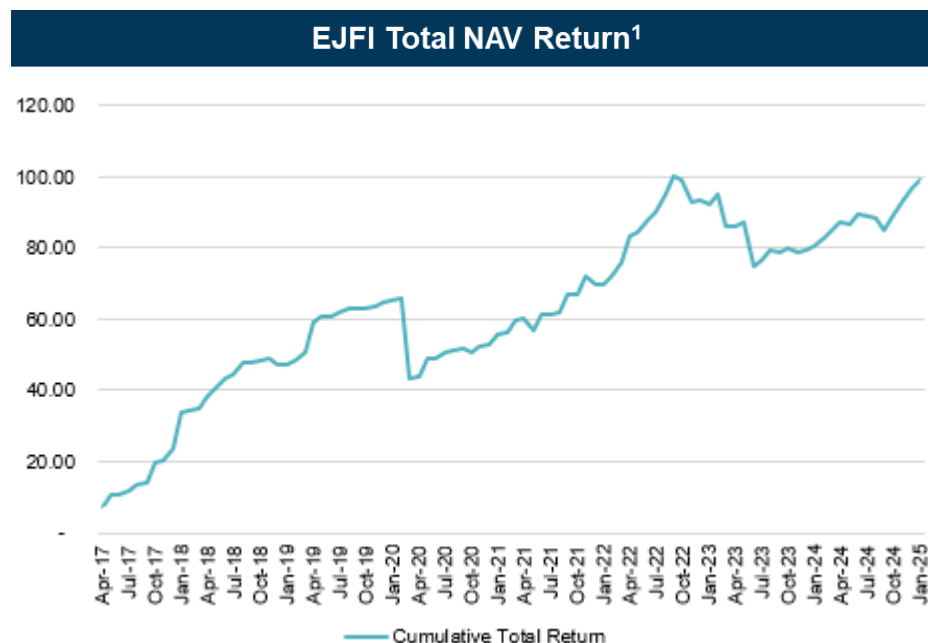
9.10%

Annualised NAV Return

~9.1%

Annual Dividend Yield (on share price)

No dividend reductions, suspensions, or deferrals since listing.



1. EJFI (LN: “EJFI”) cumulative total returns as of 31 January 2025.

EJFI Has An Experienced External Manager

Founded in 2005

by Emanuel Friedman and Neal Wilson

\$5.4 billion

Approximate total firm AUM which includes \$2.9 billion in CDO assets through affiliates¹

Offices

Arlington, VA (Headquarters)
London, England

~45 employees

Including 20 investment professionals²

Owns the Manager of EJFI

EJF Investment Manager LLC

EJF Capital LLC (“EJF”) is a global institutional alternative asset management firm with a compelling strategic approach and independent global perspective.

Experience

Seasoned portfolio team has significant experience in **financials** and a skill set to deliver what we believe is a **value-unlocking strategy**.

Relationships

Leverage **network** of corporate management teams and community banks to facilitate transactions and **drive returns**.

Approach

Target **complex** strategies with limited competition, foreseeable **catalysts** with definable **exit** strategies.

1. Firm AUM as of 31 December 2024 includes \$73.2 million of uncalled capital.

2. As of 31 December 2024.

Past performance is not indicative of future results.

Shareholder Alignment

The Manager is Strongly Aligned with Shareholders

- EJF and its affiliates own ~26% of the Company's ordinary shares.
- The Manager has committed to use 20% of its management fee to purchase additional EJFI shares up to Q2 2025, as long as the average share price during the prior quarter trades at least 15% below the net asset value (NAV).

**Strong
Shareholder
Base**

Top Non-EJF Affiliated Shareholders (as of 31 December 2024)

Funds managed by Premier Miton Group (UK Listed Asset Manager)	8.21%
Chairman & CEO of Private NY Asset Management Firm	6.54%
UK Insurance Company	5.86%
NY Family Office	5.42%
Founder & Co-Executive Chairman of NYSE-listed Asset Management Firm	5.09%
Funds managed by Newton Investment Management (UK Asset Manager)	5.01%

Attractive Yield...Lower Risk

EJFI Offers an Attractive Cash Yield on Regulated Debt and Asset Management Fees.

~ 65% of EJFI's Assets are In Regulated Debt of Small Banks and Insurance Companies

- ✓ Must be approved by regulators
- ✓ Primarily investment grade
- ✓ Must be paid
- ✓ Considerable contrast with other corporate and high yield debt

~ 11% of EJFI's Assets are in the Management Fee Streams of EJF Affiliates

- ✓ EJF manages pools of securitised debt that are senior in the waterfall to AAA/AA rated debt
- ✓ CDO Manager (small bank and insurance company debt)
- ✓ Mortgage Servicing Rights (conforming Fannie Mae and Freddie Mac mortgages)

The remaining EJFI Assets are in US Treasuries, cash equivalents or high credit quality credit risk transfer ("CRT") loans.

Regulated Debt – Why Invest in U.S. Small Banks?

The U.S. Has Three Banking Regimes.

Bank Assets (\$ B)	EJF'S PRIMARY INVESTMENT FOCUS ¹		
	Small \$0-50	Regional \$50-250	GSIB/Money Center \$250 +
Number of banks / Assets²	4,272 \$5.5 Trillion	27 \$3.4 Trillion	14 \$17.9 Trillion
Stress Test	No formal DFAST	Banks \$100-\$250 B subject to annual stress testing and 2-year capital plan submissions	Subject to annual DFAST and CCAR
Regulatory Considerations	Exempt from Basel III requirements >\$10 Billion in assets: Subject to CPFBS oversight Lower FDIC and compliance costs	>\$250 Billion in Assets: Systemic risk threshold	Rules tailored by Federal Reserve based on size and complexity
Whole-Bank M&A Activity	Robust	Limited	>\$700 Billion in assets: Inhibited by Regulators

1. 10 October 2019, Federal Reserve final rule to tailor capital and liquidity rules to bank size and complexity, reducing restrictions on the non-Global Systemically Important Bank holding companies. Information is based on EJF's estimates, calculations or beliefs at the time. All characterizations and synopses are EJF's beliefs and not absolute. There is no guarantee that the events or transactions reflected herein can be effected as described. 2. Source: S&P Capital IQ Pro count of banks as of 31 December 2023 and may not reconcile with FDIC records. Please see important disclosures on pages 24-27.

Why Invest in U.S. Small Banks?

EJF views the small bank market as if it were a coiled spring ... ready to unleash its considerable stored-up energy.

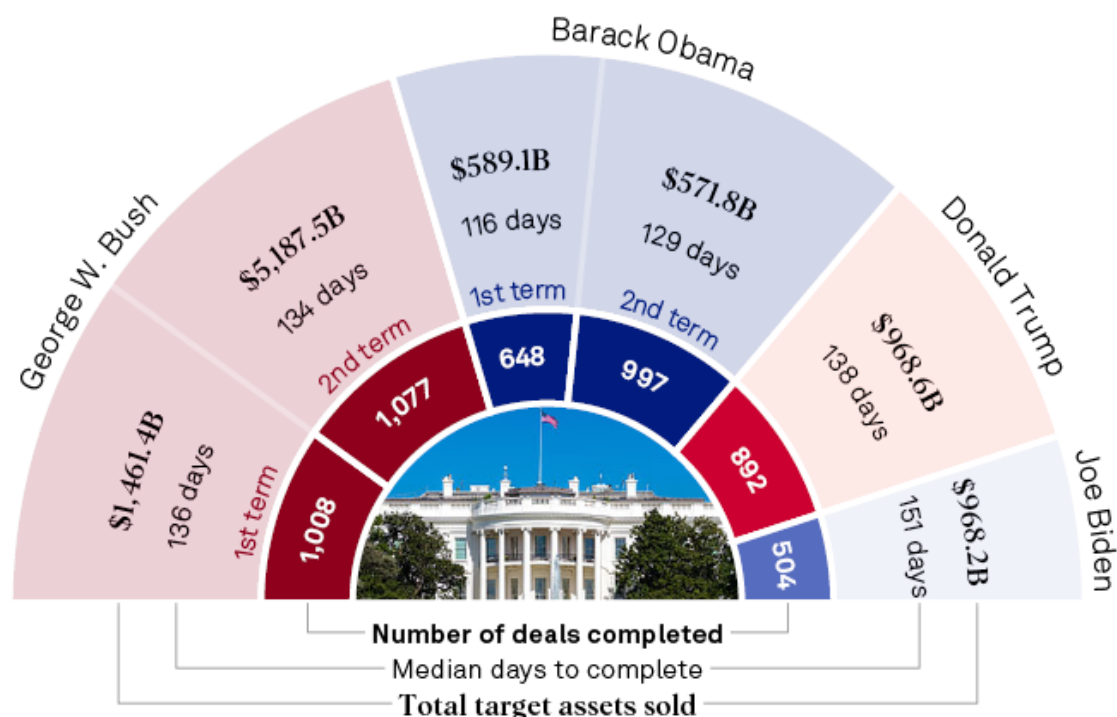
- Trump 2.0
 - New financial regulators are less hostile to small bank M&A - Incoming FDIC Chair Travis Hill's intentions are as per the below quoted on 22 January 2025:
 - *Pledges to reassess the FDIC's approach to evaluating proposed bank mergers.*
 - *Hill announced that the FDIC will revise its merger policy to ensure that transactions complying with the Bank Merger Act are approved promptly.*
 - Extension of lower corporate tax rate of **21%** installed by Trump 1.0.
 - Small US banks are largely insulated from the impact of tariffs as they have very little international business exposure given they are primarily domestic facing. Less than 1% of deposits and loan activity are foreign related.
 - Higher interest rates and steepening yield curve help net interest margins for banks generally.

Sources:

<https://www.texasbankers.com/fdics-acting-chairman-hill-releases-agency-priorities/>

U.S. Bank M&A Activity

Overview of U.S. bank M&A activity across administrations



Two of the last four years have seen the fewest bank M&A deals since the 1990s. We anticipate a rebound in deal activity, as small and regional bank share prices – the currency for M&A transactions – have risen during the past year.

Why Invest in U.S. Financials Now?

- **Investors generally are under exposed to Financials**
 - Financials represent 14.1% of S&P 500.
 - FTSE 100 has 5 constituent bank names representing 11.81% of the index.
 - HSBC alone represents 7.17% of the index; the other 4 banks are Lloyds, Barclays, Schrodgers and Natwest.
- **European Family Offices generally are under exposed to US Financials and Private Credit**
 - 42% intend to increase exposure in 2025 to US assets (from current allocation of 35%).
 - 24% intend to increase exposure in 2025 to private credit (from current allocation of 3%)

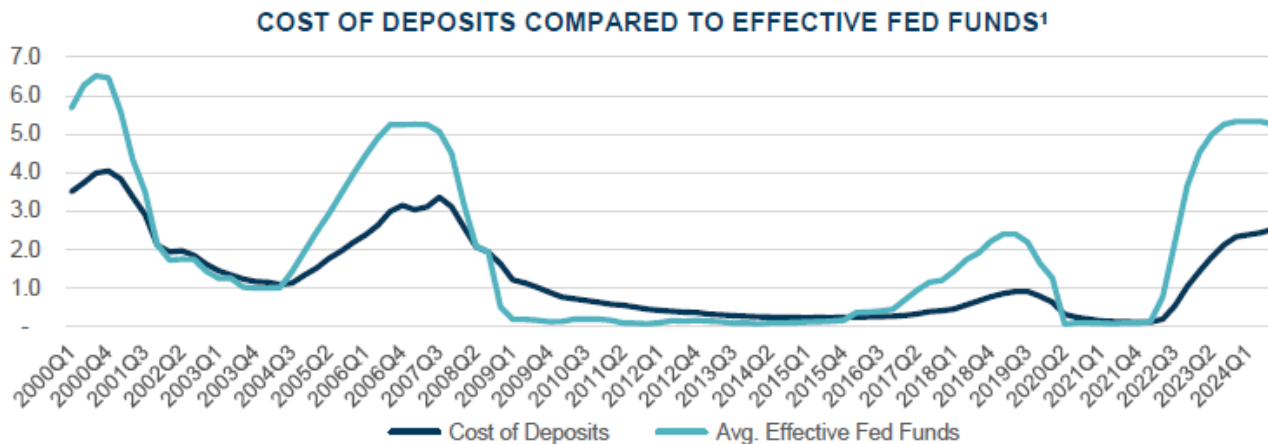
Conclusion

EJFI provides an investment trust opportunity to own US private small bank credit that is not otherwise available to UK/European investors

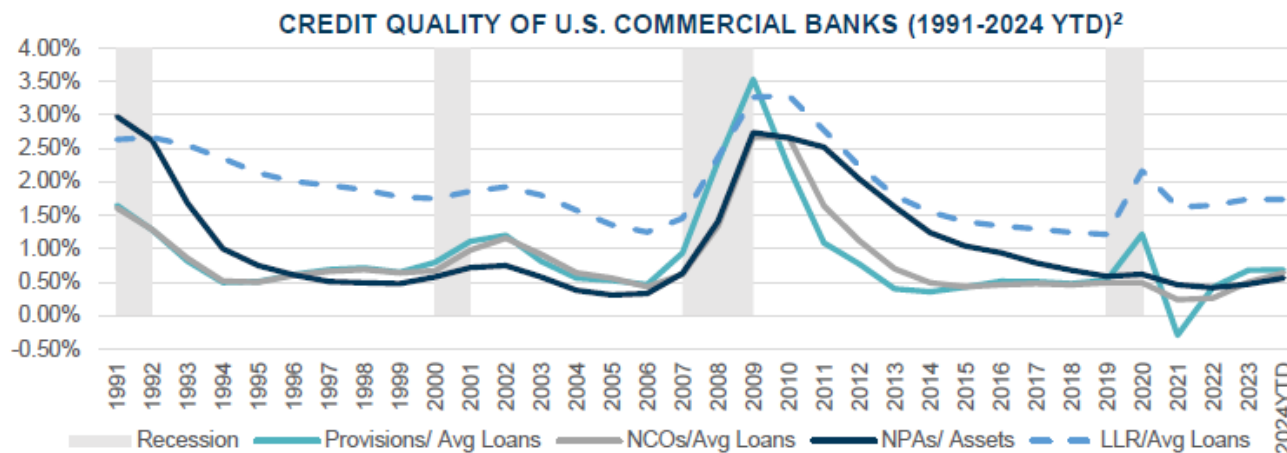
The Fundamentals of U.S. Small Banks Are Strong.

Bank Fundamentals

Deposits have become more valuable in the higher interest rate environment.



Banks' balance sheets are in a strong position.

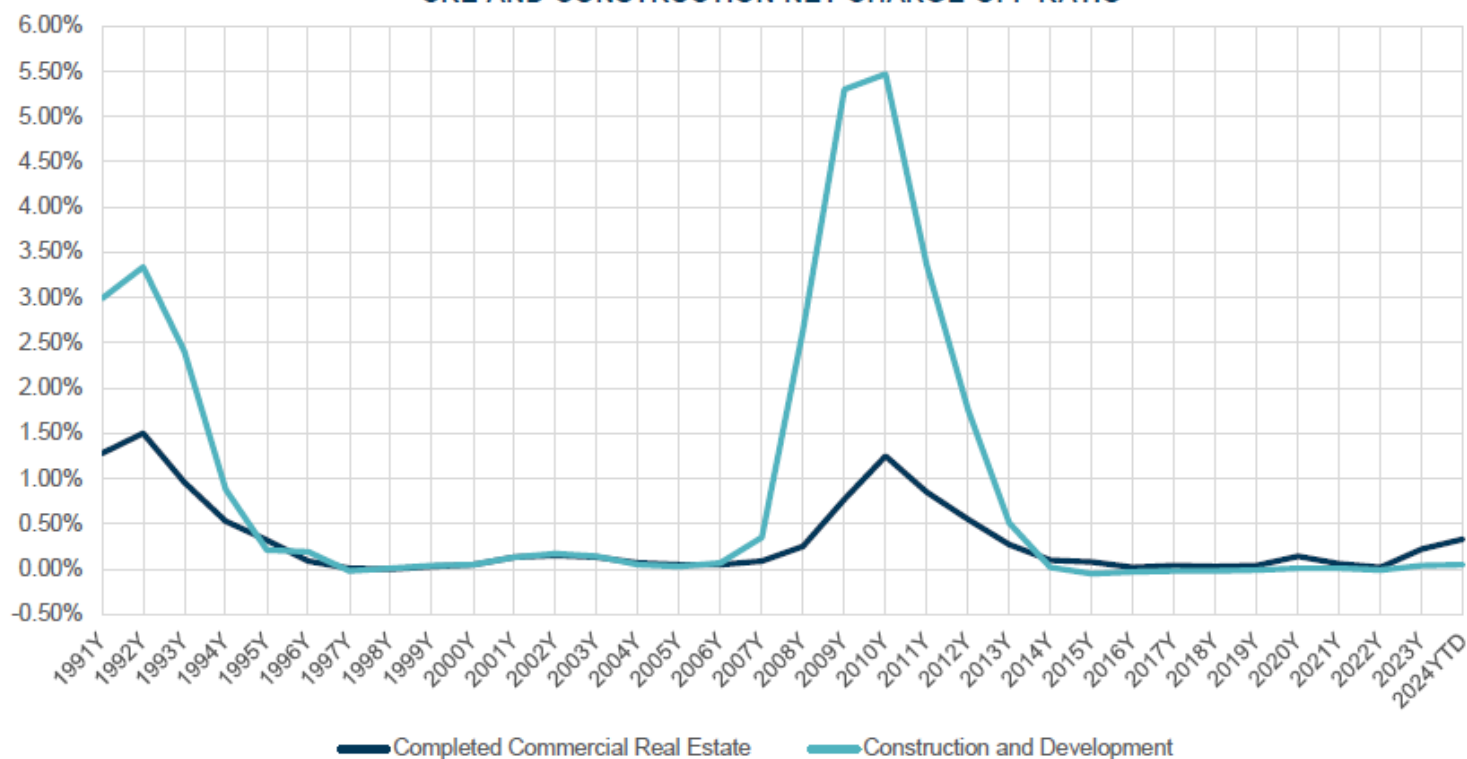


Sources:
¹Cost of Deposits Compared to Effective Fed Funds: S&P Capital IQ Pro and Bloomberg 30 September 2024.
²Credit Quality of U.S. Commercial Banks: S&P Capital IQ Pro as of 30 September 2024.

Bank Fundamentals

The banking industry has limited historical losses on completed commercial real estate exposure compared to construction and development lending.

CRE AND CONSTRUCTION NET CHARGE-OFF RATIO¹

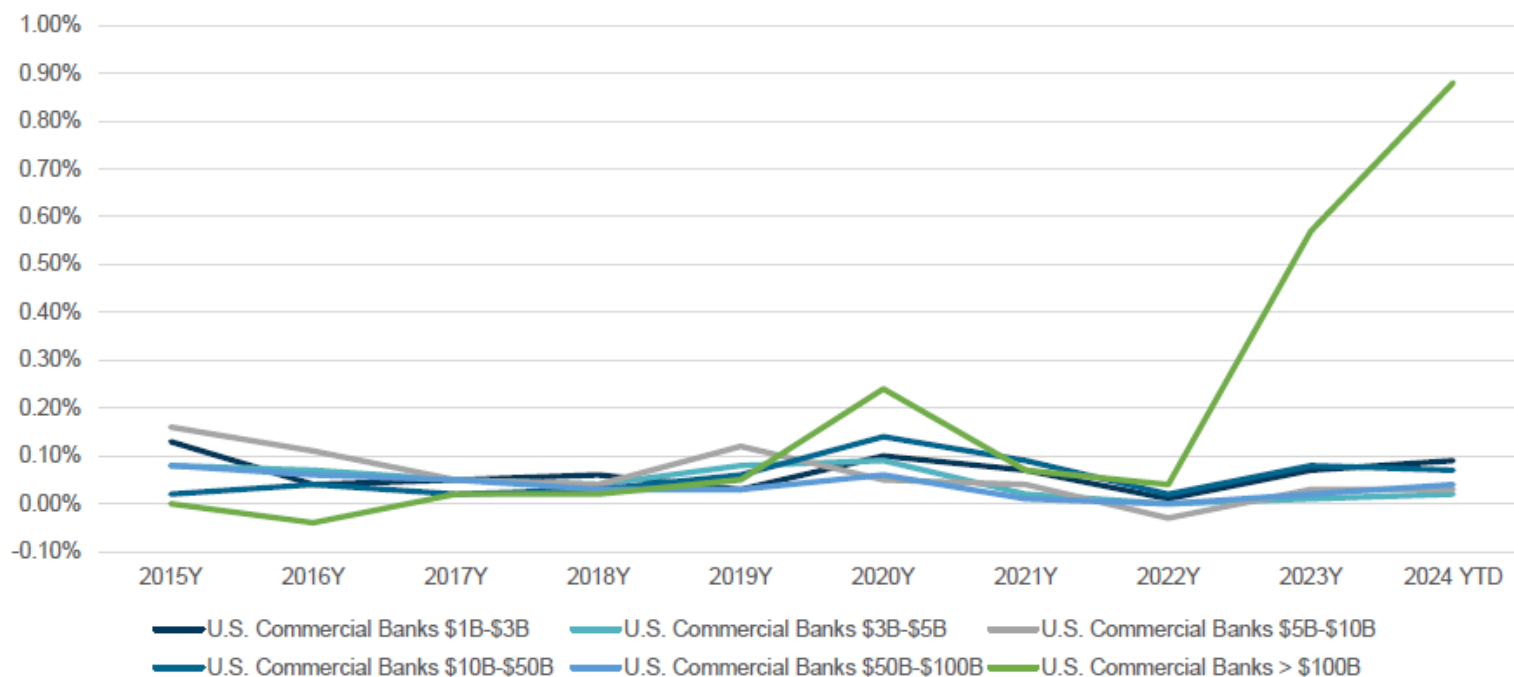


Source: 1 S&P Capital IQ Pro as of 30 September 2024.

Bank Fundamentals

So far this cycle, CRE losses have been concentrated in the largest, institutional office properties, which are primarily financed by the largest banks with the ability to do a loan large enough for an urban, multi-tenant office building.

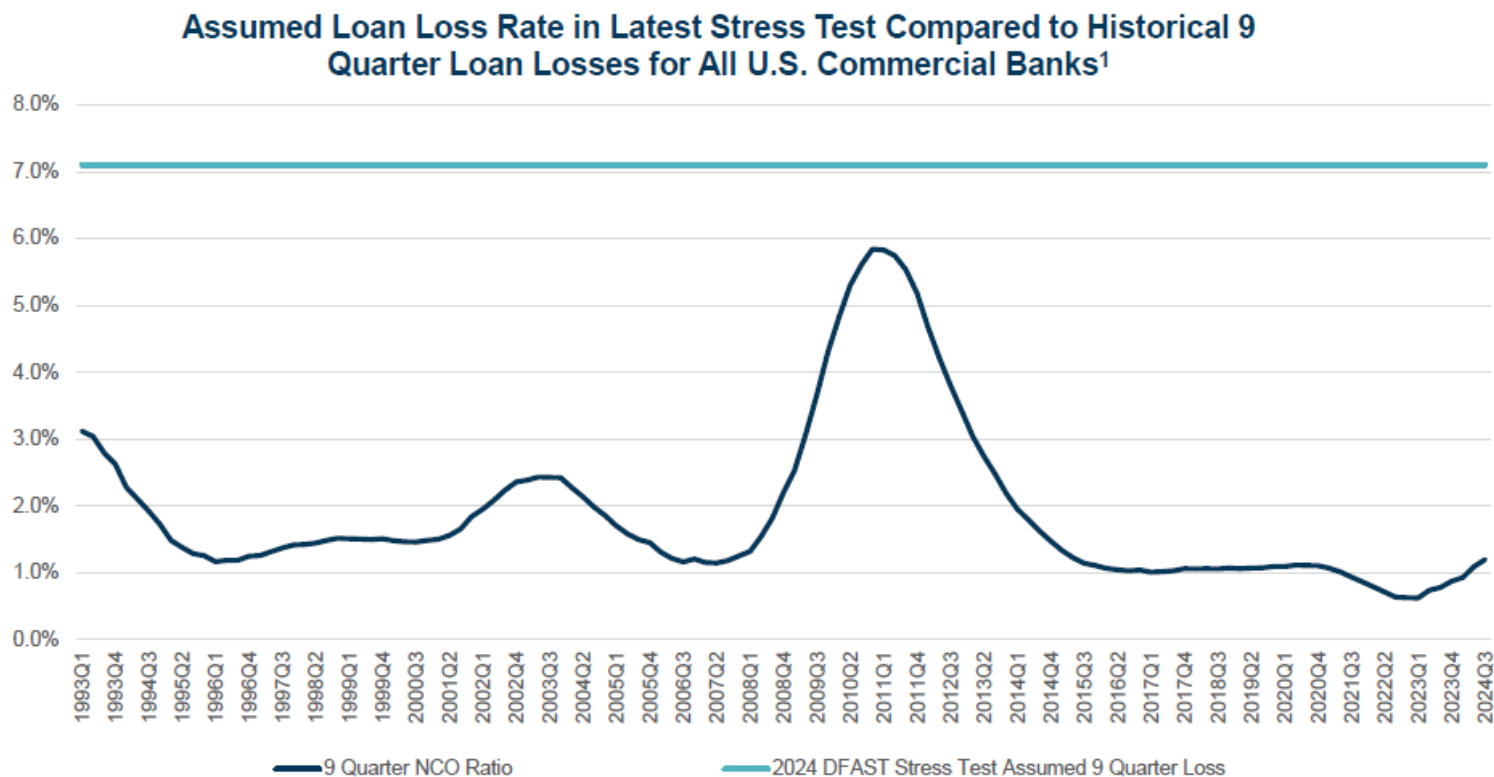
CRE Net Charge-Off Ratio by Bank Asset Size¹



Source: 1 S&P Capital IQ Pro as of 30 September 2024.

Bank Fundamentals

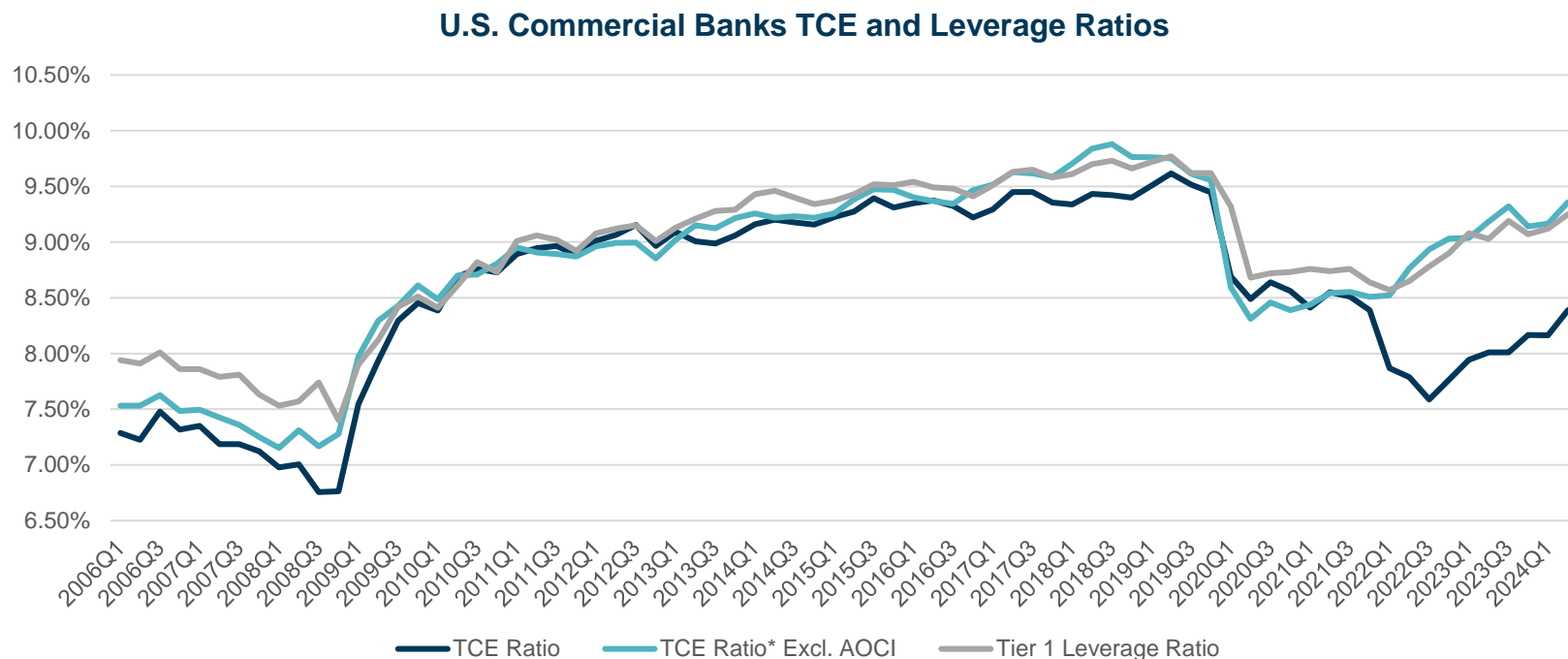
Assumed Loan Loss Rate in Latest Stress Test Compared to Historical 9 Quarter Loan Losses for All U.S. Commercial Banks.



Source: Federal Reserve 2024 DFAST Data and S&P Capital IQ Pro as of 30 September 2024.

Bank Fundamentals

Post COVID-19 TCE and Tier 1 leverage ratios have rebounded.



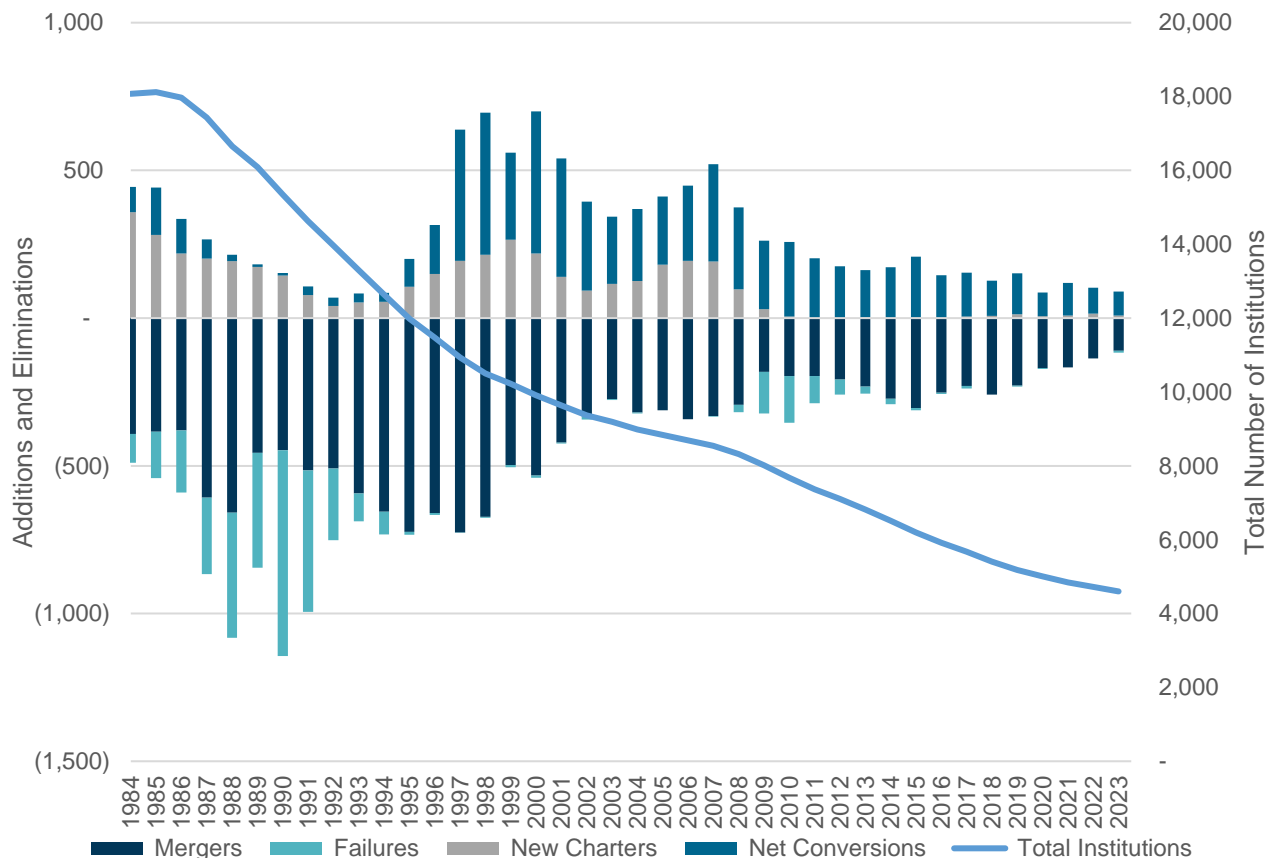
Source: S&P Capital IQ Pro as of 30 September 2024.

Secular Consolidation of Banks in the U.S.

Robust bank M&A activity and few new bank charters continues to lead to a decline in the number of banks.

In the 1990s, changes to regulations enabled interstate banking, which has driven consolidation ever since.

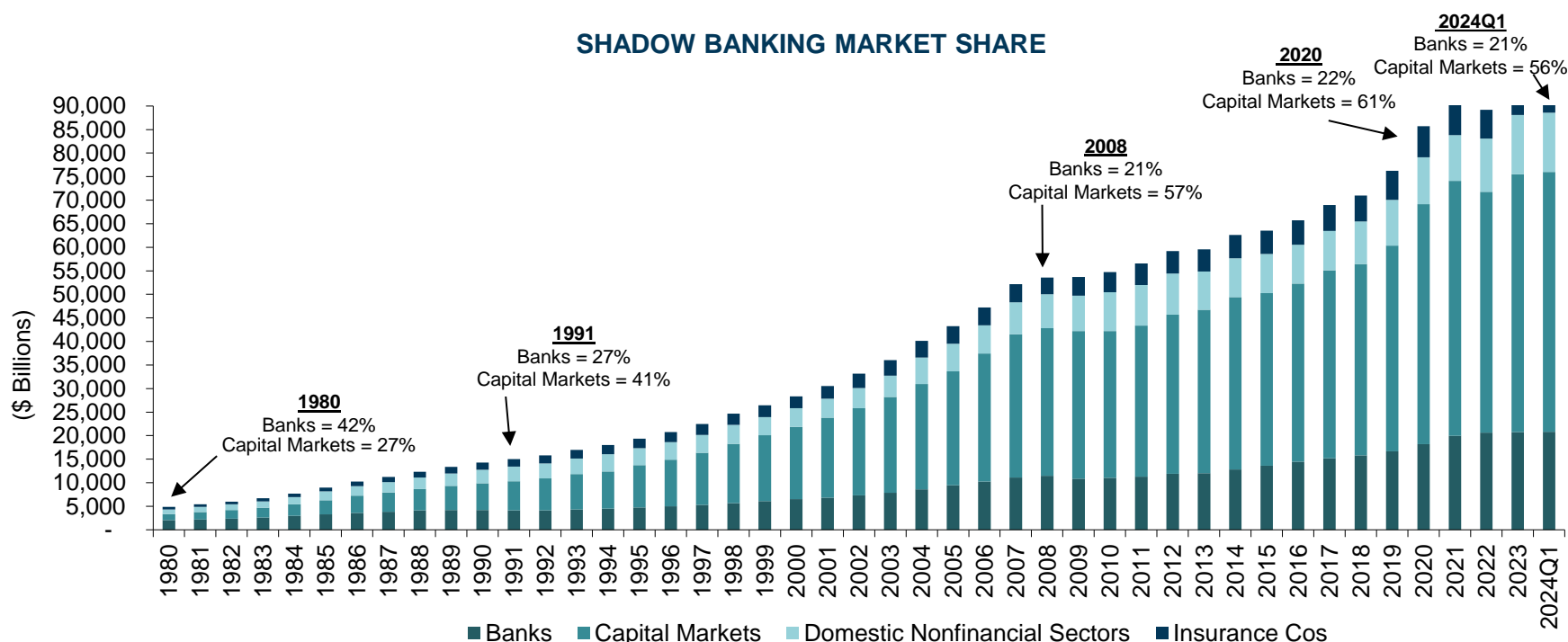
Consolidation improves credit profile of small bank debt instruments.



Source: [FDIC: Historical Bank Data](#).

Shadow Banking System

Post the Global Financial Crisis (“GFC”), increased regulation and lower interest rates made U.S. commercial banks less competitive versus non-bank lenders, who took market share. Regulatory pressure has led to stronger underwriting standards and robust capital and liquidity levels.



Source: Federal Reserve Data as of Q1 2024.

EJFI Portfolio Overview

EJFI's Assets Have Attractive Risk/Reward Characteristics

EJFI Portfolio as of 31 January 2025	Amount (£'million)	% of Gross assets	Risk profile of underlying exposure	Estimated Gross Yield ¹²
Floating & Fixed Rate Regulatory Debt issued by small US banks and insurance companies	84.1	65%	Baa3-Ba3	13%
Money Market Fund	17.0	13%	Aaa	4%
Participation in certain management fee income streams of EJF Capital LLC	13.5	11%	Senior in the waterfall to AAA/AA rated debt	N/A
Cash – Unrestricted and restricted	5.5	4%	Aa3	
CRTs	4.7	4%	N/A	13-20%
US Treasuries	3.2	2%	Aaa	4%
Other Assets	0.6	0%	N/A	N/M
Gross assets	128.6			10%
Net assets	101.8			13%

1. Estimated gross yield is based on valuation at 31 January 2025, estimated gross income for next 12 months and is prior to any leverage costs, management fees and operating expenses. EJFI has issued a term debt (ZDPs) that matures in June 2025 with an amortised value of £26.2m.
2. There can be no assurances that the estimated returns will be realised as portrayed in this document and investors should place no reliance on such estimated returns in making any investment decision. Estimated returns are targets only and not a profit forecast. This information is intended to be illustrative only and is not designed to predict the future performance of EJFI or its investment portfolio.

An Opportunistic Approach

EJFI has been opportunistic since its inception.

Closed-end fund listed on the London Stock Exchange in April 2017

- EJFI initially invested primarily in regulated debt issued by US small banks and insurance companies.
- Prior to the Federal Reserve increasing interest rates at a pace not seen in 40 years, EJFI invested in Mortgage Servicing Rights (MSRs) that increase in value as rates increase. EJFI has had a greater than 20% IRR in MSRs since its initial investment in 2022.
- In 2024, EJFI began investing in small bank Credit Risk Transfer (CRT) transactions.

Looking Forward: CRT

Credit Risk Transfer (“CRT”) Transaction

In 2024, EJFI began investing in small bank CRT transactions. Although SRT/CRT transactions have been a tool utilised by banks in Europe since the GFC, CRTs are a nascent strategy in the US and with small banks in particular. Such transactions have low credit risk and 12-20% annualised returns.

Merchants Bank of Indiana

- \$16.5 Billion asset bank
- Reference Pool: 37 floating rate loans secured by 1st lien mortgage on senior housing properties
- 1-month SOFR +15.5%
- Credit Quality: Historic losses of 0.3% per year with a 50% recovery
- Reduces RWA on assets from 100% to 20%

A Southeast U.S. Bank

- ~\$100 Billion asset bank
- Reference Pool: \$1.73B of prime, jumbo, family first lien mortgage loans
- Credit Quality: Historic losses of 0.03% per year
- Reduces RWA on assets from 50% to 20%

The Risks of Investing in EJFI

Liquidity
<ul style="list-style-type: none"> • The liquidity in EJFI shares is modest. • This varies on how many shares one chooses to purchase. • The average daily trading volume over the last 3-months was 33,782¹

Risk Mitigation
<ul style="list-style-type: none"> • In the Manager's opinion, the risks posed by EJFI's shares are more than offset by the discount at which they trade (approximately 28.9%). • The board of EJFI has authority to tender up to 5% of outstanding shares on an annual basis for the next five years. • The Manager is aligned with shareholders with ownership of approximately 26% of shares and commitment to purchases more with 20% of its quarterly management fees.

1. Source: Bloomberg as of 20th February 2025.

EJFI Board and Advisory Team

Independent Board Of Directors



John Kingston III

Chair of the Board

- Retired as Vice Chairman of Affiliated Managers Group (NYSE: AMG) in 2015 after a 16-year career with AMG.
- Business and legal background.



Alan Dunphy

Chair of Audit and Risk Committee

- Director of Altum Group (Jersey).
- Accounting background.



Nick Watkins

Chair of Management Engagement Committee

- Partner and Director of Altair Partners Limited (Jersey).
- Qualified solicitor in England and Wales.

Advisers & Service Providers to EJFI

Auditor	KPMG
Tax	PricewaterhouseCoopers
Prime Broker	Citigroup Global Markets
Legal (U.S. and U.K.)	Clifford Chance
Legal (Jersey)	Carey Olsen
Joint Corporate Broker	Panmure Liberum ; Barclays Bank
Fund Administrator	Apex Financial Services (Alternative Funds) Limited
Registrar	Computershare Limited

Enquiries

<p>For the Manager</p>	<p>EJF Investments Manager LLC</p> <p>Mungo Hargreaves mhargreaves@ejfcap.com +44 203 752 6774</p> <p>Jay Ghatalia jghatalia@ejfcap.com +44 203 752 6776</p>
<p>For the Brokers</p>	<p>Panmure Liberum Darren Vickers ejfinvestments@panmureliberum.com +44 203 100 2222</p> <p>Barclays Bank PLC Dion Di Miceli / Stuart Mures / James Atkinson BarclaysInvestmentCompanies@barclays.com +44 20 7623 2323</p>
<p>For the Independent Directors</p>	<p>John Kingston III Alan Dunphy Nick Watkins ejficosec@apexgroup.com</p>
<p>For the Company Secretary and Administrator</p>	<p>Apex Financial Services (Alternative Funds) Limited ejficosec@apexgroup.com +44 204 549 0721</p>



Legal Disclosures

PAST PERFORMANCE IS NOT INDICATIVE OF FUTURE RESULTS, WHICH MAY VARY.

THIS PRESENTATION AND ITS CONTENTS ARE NOT FOR RELEASE, PUBLICATION OR DISTRIBUTION, IN WHOLE OR IN PART, DIRECTLY OR INDIRECTLY, IN OR INTO OR FROM AUSTRALIA, CANADA, SOUTH AFRICA, THE EUROPEAN ECONOMIC AREA ("EEA") (WITH THE EXCEPTION OF IRELAND) OR ANY JURISDICTION WHERE SUCH RELEASE, PUBLICATION OR DISTRIBUTION IS UNLAWFUL.

This presentation has been prepared by EJF Capital LLC ("EJF") on behalf of EJF Investments Ltd ("EJFI" or the "Company") to update investors for their information only, must not be relied upon for any purpose and is not intended to be used as part of an offer. The presentation has not been independently verified, contains only summary information and is incomplete. The Information (as defined below) and opinions contained herein are provided as at the date of this presentation, and no representation or warranty, express or implied, is made or given by or on behalf of the Company, EJF Investments Manager LLC (the "Manager"), EJF and/or Liberum Capital Limited ("Liberum"), Barclays Bank PLC ("Barclays") or any of their respective parent or subsidiary undertakings, or the subsidiary undertakings of any such parent undertakings, or any of such person's respective directors, officers, employees, agents, affiliates or advisers, as to, and no reliance should be placed on, the accuracy, completeness or fairness of the Information or opinions contained in this presentation and no responsibility or liability is assumed by any such persons for any such Information or opinions or for any errors or omissions. The Information does not constitute or form part of and should not be construed as an offer or the solicitation of an offer to subscribe for or purchase securities of the Company.

This document and the Information contained herein may not be disclosed, taken away, reproduced, redistributed, copied or passed on, directly or indirectly, to any other person or published or used in whole or in part, for any purpose. This document is given in conjunction with an oral or video presentation and should not be taken out of context.

All Information presented or contained in this presentation is subject to verification, correction, completion and change without notice. None of the Company, the Manager, EJF, Barclays or Liberum or any of their respective parent or subsidiary undertakings, or the subsidiary undertakings of any such parent undertakings, or any of such person's respective directors, officers, employees, agents, affiliates or advisers, undertakes any obligation to amend, correct or update this presentation or to provide the recipient with access to any additional information that may arise in connection with it.

This presentation does not constitute or form part of, and should not be construed as, any offer, placement, invitation or recommendation to purchase, sell or subscribe for any securities in any jurisdiction and neither the issue of the Information nor anything contained herein shall form the basis of or be relied upon in connection with, or act as an inducement to enter into, any investment activity. This presentation does not purport to contain all of the information that may be required to evaluate any investment in the Company or any of its securities and should not be relied upon to form the basis of, or be relied on in connection with, any contract or commitment or investment decision whatsoever. This presentation is intended to present background information on the Company, its business and the industry in which it operates (the "Information") and is not intended to provide complete disclosure upon which an investment decision could be made. Any investment decision should be made solely on the basis of the Company's prospectus (together with any supplementary prospectus, if relevant). The merit and suitability of an investment in the Company should be independently evaluated and any person considering such an investment in the Company is advised to obtain independent advice as to the legal, tax, accounting, financial, credit and other related advice prior to making an investment.

Legal Disclosures

Statements of historical events are strategy and fund specific and may not apply to all products and services offered by the Company, the Manager or EJF. Certain statements may contain performance calculations which were prepared by EJF and contain assumptions about future delinquency, deferrals, default and other non-performance of the outstanding debt and securities. Any unanticipated incremental deferrals or defaults by such securities will have a material effect on any returns portrayed. Such statements are subject to various risks or events that may cause actual results to differ, such as extension risk, market forces, macroeconomic events, interest rate movements, liquidity in the market, activities and events specific to the underlying collateral's industry. The information in this presentation may include figures, statements, opinions, analysis, or other information that paraphrase, characterise, categorise, summarise, abbreviate, or are otherwise reductive to the complete set of facts and events that have or will transpire. The information in this presentation is based on EJF's beliefs, assumptions and information available at the time of the presentation and is subject to change. The trading observations and marketplace commentary contained in this presentation reflects EJF's historical observations in the market and may not comprise appropriate benchmarks for current or future valuations of these securities. Values provided do not necessarily adhere or conform to EJF's valuation policies. Certain returns implied herein are gross of fees and expenses and reflect the reinvestment of dividends and other earnings. Net performance returns to an investor in any fund will vary from the returns expressed herein due to a number of factors, including any applicable incentive allocation and the timing of that allocation, the timing of actual payment of fees and expenses (which may differ from the timing of accruals for those items). It should be noted that certain fees will have a compounding effect on the returns (for example an account valued at \$1,000,000 achieves a 10 per cent. compounded annual total return (on a gross of fees basis) for 10 years. If the management fee was 1 per cent. of the average assets under management per year for the 10-year period, the annual return would be approximately 8.9 per cent. The approximate dollar value of the account would be \$2,345,735 (net) as opposed to \$2,593,742 (gross)). The securities listed are illiquid, and current and future market prices will differ materially from historical trading observations due to several factors such as size, volume, volatility, and execution externalities that contribute to liquidating certain positions and no assurances can be guaranteed to their disposition, sale or liquidation otherwise.

The Information contains statistics, data and other information relating to markets, market sizes, market shares, market positions and other industry data pertaining to the Company's business and markets. Unless otherwise indicated, such information is based on the EJF's analysis of multiple sources such as industry publications, market research and other publicly available information. Such information has been accurately reproduced and, as far as EJF is aware and able to ascertain, no facts have been omitted which would render the reproduced information provided inaccurate or misleading. Third party industry publications, studies and surveys generally state that the data contained therein have been obtained from sources believed to be reliable, but that there is no guarantee of the accuracy or completeness of such data. While EJF reasonably believes that each of these publications, studies and surveys has been prepared by a reputable party, neither EJF nor Barclays or Liberum, nor any of their respective parent or subsidiary undertakings, or the subsidiary undertakings of any such parent undertakings, or any of such person's respective directors, officers, employees, agents, affiliates or advisers have independently verified the data contained therein. In addition, certain of the industry, market and competitive position data contained in the Information come from the EJF's own internal research and estimates based on the knowledge and experience of the Company's management in the markets in which the Company operates. While EJF reasonably believes that such research and estimates are reasonable and reliable, they, and their underlying methodology and assumptions, have not been verified by any independent source for accuracy or completeness and are subject to change. Accordingly, undue reliance should not be placed on any of the industry, market or competitive position data contained in the Information.

Certain financial information and operating data relating to the Company contained in the Information has not been audited and in some cases is based on management information and estimates. It is intended that such numbers and estimates will be subject to further review in due course, and may therefore change. In addition, certain figures contained in this Presentation, including financial information, have been subject to rounding adjustments. Accordingly, in certain instances, the sum or percentage change of the numbers contained in this Presentation may not conform exactly to the total figure given.

Legal Disclosures

This presentation does not constitute an offer to sell, or a solicitation of an offer to buy, securities in the United States. The securities mentioned herein have not been, and will not be, registered under the US Securities Act of 1933, as amended (the "US Securities Act") or with any securities regulatory authority of any state or other jurisdiction of the United States and will not be offered, sold, exercised, resold, transferred or delivered, directly or indirectly, in or into the United States except to persons who are both qualified purchasers as defined in Section 2(a)(51) of the United States Investment Company Act of 1940, as amended (the "US Investment Company Act") and accredited investors as defined in Rule 501(a) of Regulation D under the US Securities Act or to, or for the account or benefit of, any US person (as defined under Regulation S under the US Securities Act). The Company has not been, and will not be, registered under the US Investment Company Act. Any failure to comply with the foregoing restrictions may constitute a violation of US securities laws. Furthermore, any securities offered in connection with any transaction described herein will not be recommended or approved by any United States federal or state securities commission or any other regulatory authority. Furthermore, the foregoing authorities have not confirmed the accuracy or determined the adequacy of this material. Any representation to the contrary is a criminal offence. Any securities offered will be subject to certain restrictions on transfers as described in the prospectus and set forth in the indenture pursuant to which any such securities will be issued.

The presentation may constitute "marketing" in the EEA under the Alternative Investment Fund Managers Directive (2011/61/EU), as amended ("EU AIFMD") and in the United Kingdom under the United Kingdom legislation implementing the EU AIFMD in force from 1 January 2021 ("UK AIFMD", together with the EU AIFMD, "AIFMD"). The presentation is only addressed to and directed at persons in the United Kingdom and the Republic of Ireland where registrations for marketing have been made under AIFMD and not at investors in any other EEA jurisdiction.

In addition, in the United Kingdom the presentation is only addressed to and directed at "qualified investors" within the meaning of Article 2(e) of the Prospectus Regulation (Regulation (EU) 2017/1129), as amended (including such regulation as it forms part of UK Law by virtue of the European (Withdrawal) Act 2018) ("Qualified Investors") and who (i) are persons who have professional experience in matters relating to investments falling within Article 19(5) of the Financial Services and Markets Act 2000 (Financial Promotion) Order 2005 (the "Order") and/or Article 14(5) of the Financial Services and Markets Act 2000 (Promotion of Collective Investment Schemes) (Exemptions) Order 2001 (the "PCIS"), (ii) are persons who are high net worth entities falling within Article 49(2) of the Order and/or Article 22 of the PCIS and (iii) are persons to whom it may otherwise be lawful to communicate it (all such persons together being referred to as "relevant persons").

In the Republic of Ireland, the presentation is only addressed to and directed at Qualified Investors who are "professional investors" under the European Union (Alternative Investment Fund Managers) Regulations 2013 (the "AIFM Regulations") and the requirements of the Central Bank of Ireland. In accordance with regulation 43 of the AIFM Regulations, the intention to market to Professional Investors in the Republic of Ireland has been notified to the Central Bank of Ireland.

This presentation includes forward-looking statements. The words "expect", "anticipate", "intends", "plan", "estimate", "aim", "forecast", "project" and similar expressions (or their negative) identify certain of these forward-looking statements. These forward-looking statements are statements regarding the Company's, the Manager's and EJF's intentions, beliefs or current expectations concerning, among other things, the Company's results of operations, financial condition, liquidity, prospects, growth, strategies and the industry in which the Company operates. The forward-looking statements in this presentation are based on numerous assumptions regarding the Company's present and future business strategies and the environment in which the Company will operate in the future. Forward-looking statements involve inherent known and unknown risks, uncertainties and contingencies because they relate to events and depend on circumstances that may or may not occur in the future and may cause the actual results, performance or achievements of the Company to be materially different from those expressed or implied by such forward looking statements. Many of these risks and uncertainties relate to factors that are beyond the Company's ability to control or estimate precisely, such as future market conditions, currency fluctuations, the behaviour of other market participants, the actions of regulators and other factors such as the Company's ability to continue to obtain financing to meet its liquidity needs, changes in the political, social and regulatory framework in which the Company operates or in economic or technological trends or conditions.

Past performance should not be taken as an indication or guarantee of future results, and no representation or warranty, express or implied, is made regarding future performance. The Company, the Manager, EJF, Barclays and Liberum expressly disclaims any obligation or undertaking to release any updates or revisions to any statement to reflect any change in the Company's, the Manager's, EJF's, Barclays' or Liberum's expectations with regard thereto or any change in events, conditions or circumstances on which any statement is based after the date of this presentation or to update or to keep current any Information contained in this presentation. Accordingly, undue reliance should not be placed on the forward-looking statements, which speak only as of the date of this presentation.

Legal Disclosures

Each of Barclays Bank PLC, which is authorised by the Prudential Regulation Authority (the “PRA”) and regulated in the United Kingdom by the Financial Conduct Authority (the “FCA”) and the PRA, and Liberum, which is authorised and regulated in the United Kingdom by the FCA (together, Barclays Bank PLC and Liberum being the “Joint Brokers”), is acting exclusively for the Company and no one else in connection with the matters described in this presentation. Each of the Joint Brokers will not regard any other person (whether or not a recipient of this presentation) as a client in relation thereto and will not be responsible to anyone other than the Company for providing the protections afforded to its clients nor for the giving of advice in relation to the matters contained herein or any transaction, matter or arrangement referred to in this presentation. Neither of the Joint Brokers, nor any of their respective directors, officers, employees, advisers or agents accepts any responsibility or liability whatsoever for this presentation, its contents or otherwise in connection with it or any other information relating to the Company, whether in written, oral or in a visual or electronic format. The Company, which is regulated by the Jersey Financial Services Commission, is classified as a Listed Fund.

Certain information contained herein has been provided by outside parties or vendors. Although every effort has been made to ensure the information herein contained is, or is based on, sources believed by EJF to be reliable, no guarantee is made as to its accuracy or completeness. Accordingly, EJF has relied upon and assumed, without independent verification, the accuracy and completeness of all information available to it. EJF expressly disclaims any liability whatsoever for any loss arising from or in reliance upon the whole or any part of the content herein.

The scenarios, risks, Information and forward looking statements presented in this document are not comprehensive of the securities and strategies referenced and are solely for illustrative purposes. Therefore, this document, as well as the forward looking statements and Information, cannot be relied upon for any purpose other than the current illustrative one.

EJF cannot guarantee that the securities and/or transactions described in this document were purchased or effected as described. EJF clients may already own securities that advance or conflict with any strategies described herein. The specific securities identified and described in this document do not represent all of the securities purchased, sold, or recommended by EJF, and the reader should not assume that investments in the securities identified and discussed were or will be profitable. This document shall not in any event be deemed to be complete and exhaustive information on the subjects covered.

Investors should be aware that although EJF, the Manager and the Company (as applicable to their relevant roles) will seek to manage any potential conflicts of interest in good faith, having regard to the nature and scale of EJF's operations, there will be occasions when EJF and the Manager and their respective directors or affiliates, as applicable, may encounter conflicts of interest in connection with the Company. Certain inherent conflicts of interest arise from the fact that EJF and its affiliates (collectively “EJF Affiliates”) may provide investment management, advisory and support services to EJF Affiliates' sponsored securitisations, the Manager, EJF CDO Manager LLC, the Company and to other clients, including other securitisation vehicles, other investment funds, clients and other investment vehicles that EJF Affiliates may establish from time to time.

Such conflicts may arise in connection with decisions by EJF, EJF Affiliates and accounts or clients they manage to buy, sell, liquidate, collapse, restructure, call, redeem, or otherwise exercise certain rights of securities held by EJF Affiliates clients that may adversely impact securities held by the Company. For a more detailed discussion of risks and conflicts associated with investing in the Company, you are urged to read the Company's prospectus.

By accessing a copy of this presentation, you agree to be bound by the foregoing limitations and to maintain absolute confidentiality regarding the Information disclosed in this presentation.

The Company has appointed Hugo Fund Services SA, 6 Cours de Rive, 1204 Geneva, Switzerland, as its Swiss Representative. Banque Cantonale de Genève, 17 Quai de l'Île, CH-1208 Geneva, Switzerland is the Swiss Paying Agent. In Switzerland shares shall be distributed exclusively to qualified investors. The fund offering documents, articles of association and audited financial statements can be obtained free of charge from the Representative. The place of performance with respect to shares distributed in or from Switzerland is the registered office of the Representative.